

# RAV4



**TOYOTA**

AFRICA  
**DRIVES**  
TOYOTA



**3** YEARS  
TOYOTA  
WARRANTY  
or 100,000 km

## ENGINES

### All New RAV4

# POWERFUL

Launched anew, and evolving in looks, drive, power and toughness, the all-new RAV4 features enhanced off-road capabilities. It is designed to greatly stimulate your mind and your curiosity. Broadening your horizons as you enter a whole new realm of crossover-SUV driving. Feeling ever bolder and relishing the journey ahead.

#### PETROL

##### 2.0 Dual VVT-iE

Power  
**127 kW / 173 DIN hp**

Transmission  
**6 M/T or A/CVT**

Drivetrain  
**4x2 or 4x4**

Fuel consumption\*  
**6.5-6.8 L/100 km**

Available on  
**ACTIVE and COMFORT**

\*Combined driving, subject to change  
6 M/T = 6 speed manual transmission  
A/CVT = automatic continuously variable transmission

#### PETROL

##### 2.5 Dual VVT-iE

Power  
**152 kW / 207 DIN hp**

Transmission  
**8 A/T**

Drivetrain  
**4x4**

Fuel consumption\*  
**7.3 L/100 km**

Available on  
**LIMITED and ADVENTURE**

\*Combined driving, subject to change  
8 A/T = 8 speed automatic transmission



\*\*Disclaimer: Toyota reserves the right to alter any details of specifications and equipment without prior notice. Details of specifications and equipment are also subject to change to suit local country conditions and requirements. Please inquire with your local dealership for details of such changes.





## New Dynamic Force Engines

The 2.5-liter engine delivers high output and world-class combustion efficiency owing to the introduction of components such as VVT-iE\*, while the 2.0-liter engine achieves a thermal efficiency of 40% and balances fuel efficiency with throttle response.



## DIRECT SHIFT 8AT

Delivers a direct shift feel in a range of driving scenarios. The transmission yields smooth and linear gear changes, as well as supreme quietness and top-class fuel economy performance.



## MULTI-TERRAIN SELECT

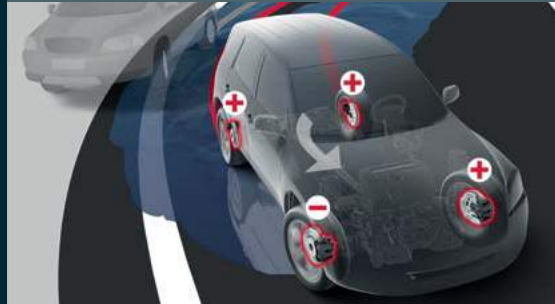
By offering a choice of three drive modes (MUD&SAND / NORMAL / ROCK&DIRT) via the dial-type switch, this system lets you obtain optimum traction on varying surfaces, helping drivers enjoy secure, sure-footed control.

\*VVT-iE: Variable Valve Timing-intelligent system by Electric motor.



### **7 Airbags as standard**

New RAV4 is equipped with SRS dual airbags for the driver and front passenger. A knee airbag is also provided for the driver. SRS side airbags are installed for the driver and front passenger. SRS curtain-shield airbags are provided for all passengers.



### **No compromise on safety**

New RAV4 comes standard with all around safety systems: ABS (Anti-lock Braking System); BA (Brake Assist); EBD (Electronic Brake Force Distribution); TSC (Trailer Sway Control); VSC (Vehicle Stability Control); TRC (Traction Control); HAC (Hill Start Assist Control); ESS (Emergency Stop Signal); PBC (Pitch and Bounce Control).

# SAFE & RELAX

## **SATISFACTION IN THE DETAILS**

New RAV4 is packed with useful features and functions that stimulate your senses, every time you drive. With a lot of storage spaces in mind, keep your valuables safe in driver side tray, passenger side tray, front cup holders and center tray.

For ultimate relaxation soft blue interior ambient lighting will make your journey even more pleasant.



# XED

## INTERIOR



\* For other interior combinations, please consult your Toyota dealership.



## GRADES



## RAV4 ACTIVE

### Main features:

- Driver & passenger airbags (SRS)
- Driver knee airbag (SRS)
- Front side airbags (SRS)
- Curtain airbags (SRS)
- ABS - Anti-lock Braking System
- BA - Brake Assist
- EBD - Electronic Brake Force Distribution
- TSC - Trailer Sway Control
- VSC - Vehicle Stability Control
- TRC - Traction Control
- HAC - Hill Start Assist Control (auto)
- ESS - Emergency Stop Signal
- PBC - Pitch and Bounce Control

- Air conditioner with clean air filter
- Multimedia touch screen 7" (17.7 cm)
- Reverse camera (back monitor with fixed line)
- Bluetooth audio and hands-free, USB, AUX
- Power windows (all with jam protection)
- Multi information display 4.2" (Colour TFT)
- Steering wheel audio and telephone controls
- Tonneau cover (rear)
- Wireless power door lock
- ISOFIX points for child safety on rear outer seats
- Outside mirrors electrically adjustable and heated
- Alloy wheels 17" 225/65 R17
- Rear parking sensors
- Roof rails
- Front fog lamps
- Dual exhaust pipes (round)
- LED Daytime Running Lights (DRL)
- LED combination rear lights
- LED type main headlamps (parabolic)
- Automatic headlamp leveling
- Tilt and telescopic steering wheel
- Integrated Sport Driving mode
- Push selector ECO / NORMAL / SPORT
- iMT - intelligent Manual Transmission (for 6 M/T)
- Front and rear stabilizers
- Electronic parking brake
- Light control system
- TNGA platform (Toyota New Global Architecture)



### 7-inch Touch multimedia screen

This multimedia system will allow you to experience a world of information and entertainment in a stylish 7" display. You can connect your Bluetooth enabled mobile phone for telephone calls and music streaming. For enhanced security, there is a convenient reverse camera.



### Parabola LED headlamps

The LED headlamps, standard on all models, bathe the road ahead with a more natural tone of light. LED's provide excellent distribution of light, contributing to good visibility and safety at night.



ACTIVE

## COMFORT

# RAV4 COMFORT

### Additional to ACTIVE grade:

- Automatic air conditioner, dual zone
- Auto dimming rear view mirror (day/night)
- Inside door handles in matte chrome
- Front and rear parking sensors
- Dual exhaust pipes (oval)
- Smart entry & Start system ("keyless" entry & start)
- Push engine start system
- 4WD system
- Rain sensor, automatic wipers control
- Rear differential



## RAV4 LIMITED



### 7-inch Multi Information Display

A large 7-inch multi-information display is installed in the center of the instrument cluster. The display provides a whole range of driver support information to enhance driving pleasure.





### Additional to COMFORT grade:

- Alloy wheels 18" (225/60 R18)
- Multi information display 7" (Colour TFT)
- Power seat adjustment for driver with memory
- Leather seats, interior details and steering wheel
- Seat heating for driver & passenger
- Wireless charger for mobile phones (Qi)
- Interior ambient lightnig
- Lumbar electronic adjustment for driver seat
- Power back door operation (up/down) with remote
- Door handles with chrome details
- Anti-Theft system immobilizer and alarm
- Moon roof wide (tilt and slide), electronic
- Privacy glass (dark grey, rear side quarter)
- Silver lower details on front and rear bumpers
- Cruise control
- DAC - Downhill Assist Control
- DTV - Dynamic Torque Vectoring system
- Dial selector for driving modes



LIMITED

\* For other interior combinations, please consult your Toyota dealership.



ADVENTURE





# VENTURE

## BOLDER, MORE RUGGED, AND MORE FUN

**The Adventure grade bolsters strength and ruggedness as an SUV. To bring out your intrepid side.**

### **Additional to LIMITED grade:**

- ADVENTURE styled orange stitching
- ADVENTURE styled leather seats
- ADVENTURE styled front grille
- ADVENTURE styled front and rear bumpers
- ADVENTURE styled wheel arches
- ADVENTURE styled front fog lamps
- Power back door operation (up/down) with foot sensor
- Power seat adjustment for driver (no memory)
- Anti-Theft system immobilizer (no alarm)
- Colour painted door handles (no chrome)



### **POWER BACK DOOR (foot sensor)**

Even when your hands are busy with luggage, the back door can be opened by moving your foot towards the touchless sensor located in the bumper lower. Simply wave your foot below the bumper to activate.



### **More character, more capability**

RAV4 = Robust Accurate Vehicle with 4 Wheel Drive. A 4WD that combines the dynamism of an SUV with precise technology and enhanced usability. Security and peace of mind through the RAV4 visual presence, ride comfort and driving performance.







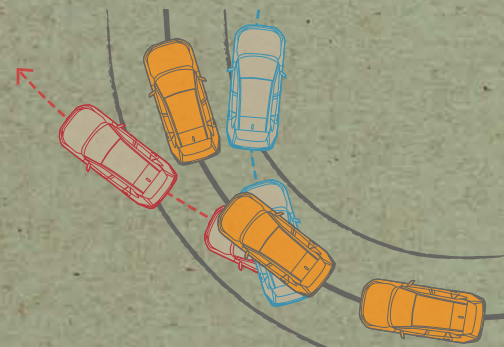
**TNGA**  
Toyota New Global Architecture

# ADVANCED

## DRIVING EXCITEMENT LIKE NEVER BEFORE

RAV4 confirms its position as leader of the SUV market with the groundbreaking powertrains. Available with the intelligent all-wheel drive system, RAV4 delivers an impressive performance both on and off-road. And with the ability to adapt to changing driving conditions automatically, you'll have all the traction you need, whenever you need it – in city, in mud, on steep slopes and even when cornering at speed.

With RAV4, you have variety too. You can choose between the formidable 2.5-litre Dynamic Force powertrain, or the capable 2.0-litre Petrol, with the option of either front or all-wheel drive. And whichever you choose, you can be sure that no other SUV delivers the same outstanding balance of power, efficiency and pure driving pleasure as the RAV4.



## DYNAMIC TORQUE VECTORING AWD

Adopts a torque vectoring mechanism to control rear torque independently on left and right wheels in response to driving conditions. The system demonstrates its influence by cornering in line with driver intentions and ample drive-through capability on extremely rough roads.



### MULTI-TERRAIN SELECT

By offering a choice of three drive modes (MUD&SAND / NORMAL / ROCK&DIRT) via the dial-type switch, this system lets you obtain optimum traction on varying surfaces, helping drivers enjoy secure, sure-footed control.





## COLOURS



**Pure White (040)**



**Pearl White (070)**



**Silver Metallic (1D6)**

# MAKE IT PERFECT

## CHOOSE FROM 9 VIBRANT COLOURS

The RAV4 offers a wide range of exterior colors from the simplicity of Pure White to the cool charisma of Midnight Blue.



**Midnight Blue Metallic (8X8)**



**Cyan Metallic (8W9)**



**Urban Khaki (6X3)**



## WHEELS & SEATS

### Seat and interior color combinations



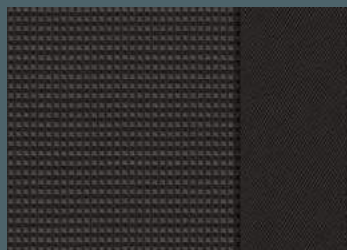
**Gray Metallic (1G3)**



**Attitude Black Metallic (218)**



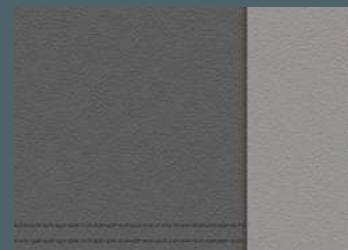
**Red Metallic (3T3)**



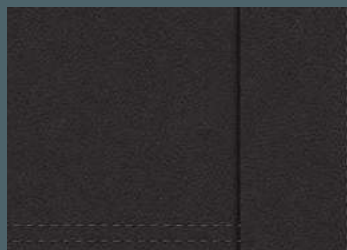
Black fabric (20)  
(Active and Comfort)



Black fabric (40)  
(Active and Comfort)



Light gray fabric (10) (Comfort) or  
Light gray leather (10) (Limited)



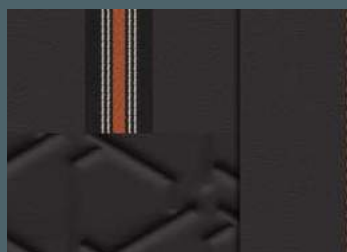
Black leather (20)  
(Limited)



Beige leather (20)  
(Limited)



17" alloy wheels  
Standard on Active and Comfort



Black leather (20)  
(Adventure)



Orchid Brown (41)  
(Adventure)



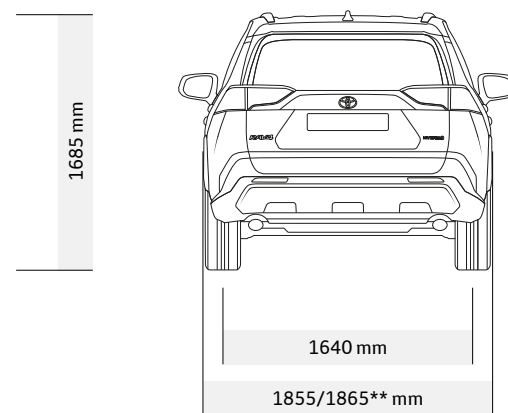
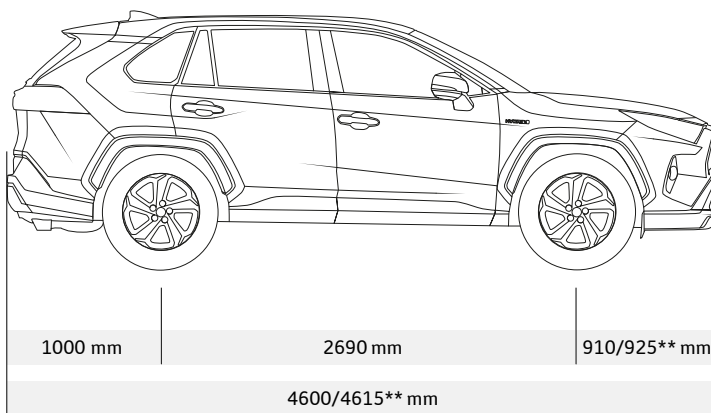
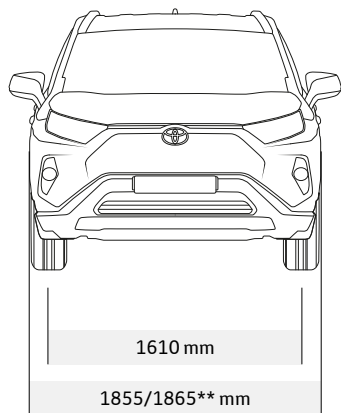
18" alloy wheels  
Standard on Limited and Adventure

## SPECIFICATIONS

ENGINE*	2.0 Dual VVT-iE 6 speed manual CVT		2.5 Dual VVT-iE 8 speed automatic	BRAKES	
Engine code	M20A-FKS		A25A-FKS	Front brakes	Ventilated discs (305 mm)
Fuel type	Petrol		Petrol	Rear brakes	Solid discs (281 mm)
Recommended Octane rating	91 or more (Octane)		91 or more (Octane)	SUSPENSION	
Number of cylinders	4 cylinders		4 cylinders	Front suspension	MacPherson strut
Cylinder arrangement	IN LINE		IN LINE	Rear suspension	Double wishbone
Fuel system	EFI (Electronic Fuel Injection)		EFI (Electronic Fuel Injection)	DIMENSIONS & WEIGHTS	
Displacement (cc)	1987		2487	Body type	SUV
Bore x stroke (mm x mm)	80.5 x 97.62		87.5 x 103.48	Exterior length (mm)	4600/4615**
Compression ratio	13.000		13.001	Exterior width (mm)	1855/1865**
Maximum power output (DIN hp)	173		207	Exterior height (mm)	1685
Maximum power output (kW/rpm)	127 @ 6600		152 @ 6600	Front tread (mm)	1610
Maximum torque (Nm/rpm)	203 @ 4400-4900		243 @ 4000-5000	Rear tread (mm)	1640
Maximum speed (km/h)	190		200	Front overhang (mm)	910/925**
FUEL CONSUMPTION*	6 speed manual	CVT	8 speed automatic	Rear overhang (mm)	1000
Combined (L/100 km)	6.8	6.5	7.3	Wheelbase (mm)	2690
CO2 EMISSIONS*				Interior length (mm)	1890
Combined (g/km)	147	155	166	Interior width (mm)	1515
Extra Urban (g/km)	130	131	139	Interior height (mm)	1230
Urban (g/km)	178	196	212	Boot compartment length (mm)	1015
Emission certification	EURO 6			Luggage compartment volume (L)	542/580
GEAR RATIOS				Seating capacity (persons)	5
Transmission type (code)	6 M/T (EG62)	CVT (K120)	8 A/T (UB80F)	Gross vehicle weight, min-max (kg)	2080-2190
1st	3.916	-	5.250	Curb weight, min-max (kg)	1500-1690
2nd	2.047	-	3.028	Payload, min-max (kg)	500-580
3rd	1.371	-	1.950	Fuel tank capacity (L)	55
4th	1.025	-	1.456	Towing capacity braked trailer (kg)	1500
5th	0.837	-	1.220	Towing capacity unbraked trailer (kg)	750
6th	0.687	-	1.000	Min. turning radius (tyres, m)	5.5
7th	-	-	0.808	Min. turning radius (body, m)	5.9
8th	-	-	0.673	OFF ROAD PERFORMANCE	
Reverse	3.416	3.136	4.014	Min. running ground clearance (mm)	180/185**
Final gear ratio	4.312	4.262	3.177	Approach angle (°)	19
				Departure angle (°)	20

\*Disclaimer: Toyota reserves the right to alter any details of specifications and equipment without prior notice. Details of specifications and equipment are also subject to change to suit local country conditions and requirements. Please inquire with your local dealership for details of such changes.

\*\*For Adventure model



### Smart Entry & Start System

This allows you to unlock the car simply by pressing a button on the door handle. The start/stop button starts the engine. All you need to do is carry the Smart Entry key with you.



### Moon roof wide (tilt and slide), electronic

A moon roof that achieves feelings of openness and comfort. The entire front side of the roof is made black, achieving a luxurious external appearance. Expresses a feeling of openness for all passengers in the vehicle. Passengers can feel close to nature while remaining inside the vehicle, such as by reclining the seats and gazing out a starry night sky.

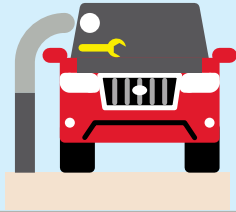


### Wireless phone charging (Qi)

A wireless charging system has been made available for the center tray of the front console (on Limited and Adventure). Wireless chargeable smartphones (Qi standard) can be charged.

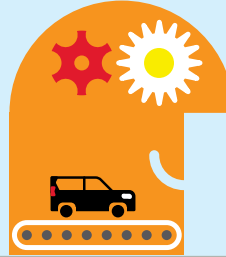


# COMPLETE PEACE OF MIND WITH TOYOTA.



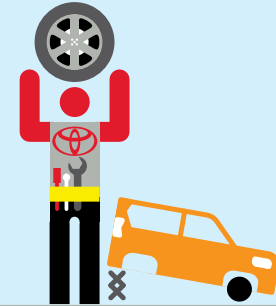
## Toyota Quality Service

Your Toyota dealership will advise you on your vehicle's service requirements. It will need a health and safety check at least once a year. An intermediate check is necessary every year or 5,000 km.



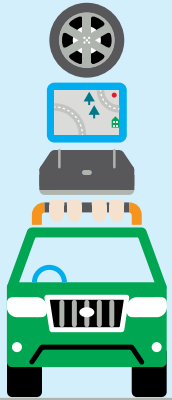
## Toyota Low Maintenance Costs

All Toyota vehicles are designed and engineered to minimize your maintenance costs. This includes fewer parts that require servicing and, equally important, is that Toyota vehicle technology is made easily accessible so that maintenance labor time is less and pricing is competitive.



## Toyota Genuine Parts

Providing the reassurance of Toyota quality, only genuine and approved components are used on your vehicle. If the vehicle is damaged, its design helps minimize the cost of repair because the most expensive-to-replace parts are deliberately located away from common damage zones. The result is ultimately less expense for parts and labor.



### **Toyota Accessories**

Toyota genuine accessories are designed and manufactured with the same care, quality and attention to detail as Toyota vehicles. Adding a touch of style, comfort, convenience and practicality, they are tested for exceptional durability to enhance the enjoyment of your new vehicle. All accessories are covered by a 1-year warranty.



### **Toyota Comprehensive Warranty**

Every new Toyota comes with a 3 years or 100,000 km vehicle warranty, which covers any defect caused by a manufacturing fault. Transport to the nearest authorized Toyota repairer will also be covered\*. In addition, a 3 years or 100,000 km paint warranty protects against defects and surface rust caused

by a manufacturing fault (except load bin's which are covered for 1 year). Every Toyota commercial vehicle is covered by a 3 years with unlimited mileage corrosion-perforation warranty\* against corrosion of body panels caused by a manufacturing fault in materials or workmanship.



### **Toyota Added Security**

Toyota's comprehensive security system withstands the insurance industry's rigorous five-minute attack test. The alarm system and engine immobilizer are approved by major insurance companies.

\*Check with your dealership for specific warranty details.

**FOR MORE INFORMATIONS ABOUT RAV4,  
TEST DRIVES AND QUOTATIONS, PLEASE  
CONTACT YOU NEAREST TOYOTA DEALERSHIP.**



AFRICA  
**DRIVES**  
TOYOTA



To the best of our knowledge, all information in this brochure is correct at time of going to print. Details of specifications and equipment provided in this brochure are subject to local conditions and requirements and may, therefore, vary from models available in your area. Please inquire with your local dealership for details on your local specifications and equipment. • Vehicle body colors may differ slightly from the printed photographs in this brochure. • The readability of QR Codes® present in this brochure may differ according to the scanner used. Toyota cannot be held responsible should your device not be able to read any QR Codes® or interactive content markers. • Africa Mobility Solutions (Pty) Ltd reserves the right to alter any details of specifications and equipment without prior notice. • © 2019 by Africa Mobility Solutions (Pty) Ltd. ('AMS'). • No part of this publication may in any way be reproduced without the prior written approval of Africa Mobility Solutions (Pty) Ltd.

