

FORTUNER



TOYOTA

AFRICA
DRIVES
TOYOTA

3 YEARS
TOYOTA
WARRANTY
or 100,000 km



GO ANYWHERE

READY FOR ACTION

Fortuner challenges the perception of power with its brand new diesel engine. New 2.8 GD engine is performing superbly thanks to new torque technology which dramatically increases torque in low to medium speed ranges and unprecedented acceleration. It also contributes to Fortuner's exceptional towing capacity. This engine is designed to keep noise levels down and efficiency up. In fact, the refined sound insulation can make you forget that you're driving a pick-up. The same is true for the efficient new 6-speed manual and new 6-speed automatic transmissions: ready for your next adventure.



Engine

2.8 GD-6

Diesel D-4D 6M/T

Power

130 kW / 177 HP

Torque

420 Nm

Drive

4x4

Body type

SUV, 7 seats

Engine

2.8 GD-6 AUTO

Diesel D-4D 6A/T

Power

130 kW / 177 HP

Torque

450 Nm

Drive

4x4

Body type

SUV, 7 seats

M/T = manual transmission

A/T = automatic transmission



MORE POWER

Up to 8% more power and 25% more torque! The newly developed GD engine features vastly evolved low-speed torque. In addition, manageability of the effective speed range has been improved, realizing unprecedented acceleration performance.

MORE EFFICIENT

Powerful and efficient. The newly developed GD engine features vastly improved fuel economy. Up to 9% on fuel savings comparing to the previous generation of engines. That means you can travel up to 90* km further and get more things done!

Powerful new engines offer high torque and power while contributing to excellent fuel economy and quietness.



NEW ENGINE (GD)

| ENGINE SPECIFICATIONS | 1GD-6AT | 1GD-6MT |
|--------------------------------|-------------|----------|
| Displacement (litres) | 2.8 | 2.8 |
| Transmission | 6-automatic | 6-manual |
| Maximum power output (kW) | 130 | 130 |
| Maximum power output (HP) | 177 | 177 |
| Maximum torque (Nm) | 450 | 420 |
| Combined fuel cons. (l/100 km) | 8.5 | 7.6 |

PREVIOUS ENGINE (KD)

| ENGINE SPECIFICATIONS | 1KD-5AT | 1KD-6MT |
|--------------------------------|-------------|----------|
| Displacement (litres) | 3.0 | 3.0 |
| Transmission | 5-automatic | 6-manual |
| Maximum power output (kW) | 120 | 120 |
| Maximum power output (HP) | 163 | 163 |
| Maximum torque (Nm) | 360 | 343 |
| Combined fuel cons. (l/100 km) | 9.3 | 8.3 |

IMPROVEMENTS

| | 1GD vs. 1KD | 1GD vs. 1KD |
|-----------------------|-------------|-------------|
| Displacement (liters) | 2.8 vs 3.0 | 2.8 vs 3.0 |
| Transmission | automatic | manual |
| More POWER | +8% | +8% |
| More TORQUE | +25% | +22% |
| Better fuel ECONOMY | +9% | +9% |

*Efficiency depends on fuel quality, driving style and road conditions.



EXPLORE MORE



THE TRUE SUV

The sharp, sculptured lines of Fortuner deliver a strong statement of purpose and intent. Up front slender headlamps, with thick chrome surrounds combine with a beefy three dimensional trapezoid bumper to create a bold and elegant form. The high body position and wide front and rear fenders come together to express a modern toughness that's accentuated by Fortuner's sleek lines. From behind, the wrap around rear glass trim is topped off with a spoiler and shark fin antenna. The rear tail lamps feature integrated LED light guides to help make sure Fortuner can't be missed, while the privacy glass keeps you discreet inside. The BI-LED headlamps bathe the road ahead with a more natural tone of light and are complemented by integrated LED Daytime Running Lamps (DRLs). LED fog lamps are fitted as standard. You'll also find the handy convenience of integrated, roof rails fitted as standard. For a simple day out or more serious adventures, Fortuner is built to take on Africa in style.



Strong features all round: BI-LED projector headlamps with Daytime Running Lights wrap around the fender for a wider, more muscular appearance.

WITHOUT LIMITS



GO WHERE YOUR SPIRIT TAKES YOU

Make no mistake, each and every Fortuner is built as a genuine 4x4 with the ability to handle seriously rough terrain. You'll have Hill-start Assist Control (HAC) and Downhill Assist Control (DAC) to help when you're going up or down steep slopes. Active Traction Control (A-TRC) automatically distributes the drive to the wheels with the best grip for superior control on slippery and uneven surfaces. The rear differential lock is standard on every Fortuner and further enhances its off road pedigree and performance. And when it comes to muscle, Fortuner boasts a massive 3,000 kg braked towing capacity. When you've got a Fortuner, you've got real confidence and strength.



Downhill Assist Control (DAC) helps you tackle a steep descent with confidence. It applies individual brakes to maintain its low speed and to keep the vehicle stable, so you can focus on steering and avoiding any obstacles. It also works when reversing, for even safer driving.



ELEGANT AND SLEEK



SPACE YOU'LL LOVE TO SHARE

Quality details enrich the quiet ride and spacious comfort of the cabin, creating a sophisticated environment for your driving pleasure.



Front seats: The sporty shape with firm sides to provide excellent hold when driving is complemented by the comfortable length of the seat cushion.



Auto air conditioner: The highly efficient system maintains a comfortable cabin temperature, and at the same time contributes to the excellent fuel economy.



Rear auto air conditioner: Vents in the ceiling above the second and third row seats ensure excellent cooling. The control panel in the ceiling above the second row seats enables convenient operation.



Audio system: The speakers are strategically positioned to provide excellent sound in all seats. The large touch screen display enables easy touch operation of switches and controls.



USB/mini-jack: Enables a portable music player to be connected and enjoyed over the vehicle's speakers.

ADVENTURE IS WAITING



Tip-and-Tumble 60/40 2nd row seats



Luggage space storage: Located in the side of the luggage space, this handy storage provides easy access to tools and gear.

Even though it's built for adventure, step inside Fortuner and you'll find it's finished to deliver highly refined levels of usability and convenience.

Room for everyone inside with seven full size seats and the 3rd row quickly folds out of the way to transform Fortuner from a family transporter to a machine ready for 4WD action and to provide maximum storage space. A one-touch tumble function on the second row seats provides easy access to the third row seats. To expand the luggage space to accommodate big or long loads, the second row seats tumble fold and a space-up function on the third row seats enables them to be folded and stored away using easy-to-reach fixed hooks.

ISOFIX child restraints are standard while the power adjustable driver seat are standard.



On hot days the air conditioned cool box is perfect to keep drinks cool. You'll also have automatic air conditioning to keep you comfortable in all weather conditions.





LUXURY WITHOUT COMPROMISE

DESIGNED WITH PURPOSE, BUILT WITH INTENT

Fortuner is equipped with a range of innovative technology, designed to make every journey more relaxing. Take the tabletstyle touch 7" screen, which combines plenty of multimedia features. It is connected to a refined audio speaker system, while you adjust the volume via the steering wheel. The 4.2" Multi-Information Display (MID) in the instrument panel incorporates 3D messages to help you drive more efficiently. It also holds the trip computer that displays essential journey data. All these functions can be easily accessed via the handy steering wheel controls.



7" Touch screen

This multimedia system will allow you to experience a world of information and entertainment in a stylish tablet-style 7" display. For enhanced security, there is a convenient reverse camera.



Multi-information display

The new color multi-information display for easy access to essential journey information.



Smart Entry & Start System

This allows you to unlock the car simply by pressing a button on the door handle. The start/stop button starts the engine. All you need to do is carry the Smart Entry key with you.



4-Wheel-Drive switch

For added convenience and style, the Fortuner is also equipped with a 4-Wheel-Drive switch instead of a lever.



Vehicle Stability Control (VSC)

VSC automatically activates each individual brake as needed and controls engine output to help maintain stability and prevent skidding when turning sharply or cornering on slippery road surfaces.



Supplemental Restraint System (SRS) – 7 airbags

Fortuner is fitted with seven airbags as standard. They include driver's knee airbag, SRS airbags for both driver and front passenger, side airbags for the front seats, and SRS curtain shield airbags covering both the front and rear seat passengers.



SERIOUS APPROACH TO SAFETY

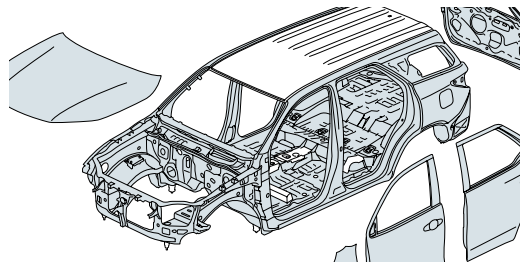
NO MATTER WHERE YOU GO

The chassis takes the term 'reinforced toughness' seriously, featuring beefy cross members, side rails and suspension towers to give Fortuner outstanding torsional rigidity and the durability you need to take you further than the end of the road. Its body utilizes superior 590MPa high grade tensile steel for extra strength and features hundreds of spot welds to provide greater stiffness. The suspension has been specifically tuned by Toyota to provide highly refined handling and ride characteristics in the uniquely African conditions and is complemented by the outstanding stopping power of large front and rear disc brakes. Other active safety technology including Vehicle Stability Control (VSC) and up to seven Supplemental Restraint System (SRS) airbags also contribute to Fortuner's excellent crash performance.



Trailer Sway Control (TSC)

TSC suppresses any trailer sway caused by wind, bumpy roads or steering etc. whenever you are towing. With sensors detecting yaw, acceleration and steering, TSC uses deceleration control and yaw moment to limit sway. The slip indicator bleeps when TSC is activated, and to warn drivers behind, the stop lamps are illuminated.



Robust body

All the sections of the body structure, including crossmember, side rail and suspension tower, have been reinforced for exceptionally high rigidity.





EXECUTIVE



Main features of Executive grade

Interior:

- Automatic air conditioner with rear controls
- Front cool box
- Radio AM/FM, MP3, CD/DVD, 6 speakers
- Multimedia touch screen 7" (17.7 cm)
- Reverse camera (back monitor)
- Auxiliary input USB & AUX with video
- Bluetooth audio and hands-free
- Leather and wood steering wheel
- Leather seats and leather door trim
- Power seat adjustment for driver
- Multi information display (Colour TFT)
- Steering wheel controls

- Power windows auto up/down (all)
- Third row seats, one touch fold
- Wireless power door lock (auto/speed sensitive)
- Illuminated entry system (inside)

Exterior:

- BI-LED type main headlamps (low and high)
- Automatic headlamp leveling system
- LED Daytime Running Lights
- LED type front fog lamps
- Automatic light control
- Roof rails

- Outside mirrors electrically adjustable & retractable
- Wide over fenders
- Side steps with black cover
- Privacy glass (dark gray, rear quarter)

Safety:

- ABS - Anti-lock Braking System
- EBD - Electronic Brake Force Distribution
- VSC - Vehicle Stability Control
- Driver & passenger airbags (SRS)
- Driver knee airbag (SRS)
- Side airbags (SRS)
- Curtain airbags (SRS)
- ISOFIX points for child safety seats x2, second row
- Immobilizer and siren, sonic sensor, alarm

Technical:

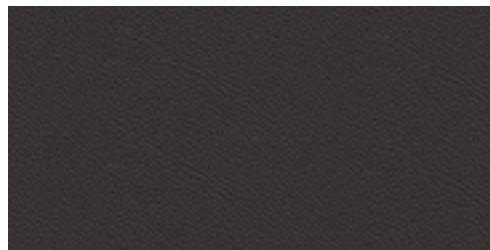
- Alloy wheels, 265/65 R17, all terrain tyres
- Cruise control
- iMT - Intelligent Manual Transmission (for 6 M/T)
- ECO driving indicator
- ECO & Power mode driving modes
- DAC - Downhill Assist Control
- HAC - Hill Start Assist Control
- A-TRC - Active Traction Control
- Smart entry & Start system ("keyless" entry & start)
- EBS - Emergency Brake Signal
- TSC - Trailer Sway Control
- Pitch and Bounce Control
- Follow me home lighting system
- Rear differential lock with 4WD switch



GREAT COLOURS, DIFFICULT CHOICE.

RESPRESENT YOUR NEW
ULTIMATE SUV.

Interior colour



Brown <Leather>



Nebula Blue Metallic <8X2>



Super White II <040>



Silver Metallic <1D6>



Gray Metallic <1G3>



Attitude Black Mica <218>



Avant-Garde Bronze Metallic <4V8>



Phantom Brown Metallic <4W9>



SPECIFICATIONS

ENGINE

| | 2.8 GD-6 diesel 6 speed manual | 2.8 GD-6 diesel 6 speed automatic |
|-------------------------------|-----------------------------------|--------------------------------------|
| Engine code | 1GD-FTV | |
| Number of cylinders | 4-cylinders, In-line | |
| Valve mechanism | 16 Valve, DOHC | |
| Fuel system | Common Rail Diesel | |
| Displacement (cc) | 2755 | |
| Bore x stroke (mm x mm) | 92.0 x 103.6 | |
| Compression ratio | 15.6 | |
| Maximum power output (DIN hp) | 177 | |
| Maximum power output (kW/rpm) | 130 @ 3400 | |
| Maximum torque (Nm/rpm) | 420 @ 1400-2600 | 450 @ 1600-2400 |
| Maximum speed (km/h) | 180 | |

FUEL CONSUMPTION

| | | |
|------------------------|-----|------|
| Combined (L/100 km) | 7.8 | 8.5 |
| Extra urban (L/100 km) | 6.9 | 7.1 |
| Urban (L/100 km) | 9.4 | 10.9 |

CO2 EMISSIONS

| | | |
|------------------------|--------|-----|
| Combined (g/km) | 204 | 224 |
| Extra Urban (g/km) | 180 | 188 |
| Urban (g/km) | 245 | 288 |
| Emission certification | EURO 4 | |

GEAR RATIOS

| | 6 speed manual | 6 speed automatic |
|-------------------|----------------|-------------------|
| Transmission type | | |
| 1st | 4.784 | 3.600 |
| 2nd | 2.423 | 2.090 |
| 3rd | 1.443 | 1.488 |
| 4th | 1.000 | 1.000 |
| 5th | 0.826 | 0.687 |
| 6th | 0.643 | 0.580 |
| Reverse | 4.066 | 3.732 |
| Final gear ratio | 3.583 | 3.909 |

BRAKES

| | |
|--------------|--------------------------|
| Front brakes | Ventilated disc (4-cyl.) |
| Rear brakes | Ventilated disc (1-cyl.) |

SUSPENSION

| | |
|------------------|------------------|
| Front suspension | Double wishbone |
| Rear suspension | Four link system |

DIMENSIONS & WEIGHTS

| | |
|---------------------------------------|-----------|
| Body type | SUV |
| Exterior length (mm) | 4795 |
| Exterior width (mm) | 1855 |
| Exterior height (mm) | 1835 |
| Front tread (mm) | 1545 |
| Rear tread (mm) | 1555 |
| Front overhang (mm) | 990 |
| Rear overhang (mm) | 1060 |
| Wheelbase (mm) | 2745 |
| Interior length (mm) | 2478 |
| Interior width (mm) | 1478 |
| Interior height (mm) | 1105 |
| Seating capacity (persons) | 7 |
| Gross vehicle weight (kg) | 2750 |
| Kerb weight, min-max (kg) | 2100-2155 |
| Payload, min-max (kg) | 595-650 |
| Fuel tank size (L) | 80 |
| Towing capacity braked trailer (kg) | 3000 |
| Towing capacity unbraked trailer (kg) | 750 |
| Min. turning radius (tyres, m) | 5.8 |
| Min. turning radius (body, m) | 6.2 |

OFF ROAD PERFORMANCE

| | |
|------------------------------------|-----|
| Min. running ground clearance (mm) | 279 |
| Approach angle (°) | 29 |
| Departure angle (°) | 25 |

AGILE, SAFE AND ROBUST



Suspension & brakes: The front and rear suspension is optimized to provide excellent stability and control. Front and rear disc brakes contribute to sure stopping performance. The intelligent Anti-lock Braking System (ABS) with Electronic Brake-force Distribution (EBD) helps you stop quickly and safely, while the Vehicle Stability Control (VSC) helps you maintain grip on slippery surfaces and provide greater control when cornering.

Frame structure: The high rigidity structure contributes to exceptional toughness in harsh environments, as well as excellent handling performance, a quiet smooth ride and reassuring feeling of safety.



1545 mm

1855 mm



2745 mm

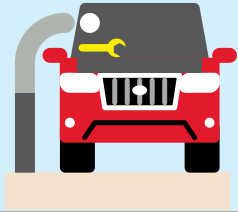
4795 mm

1835 mm



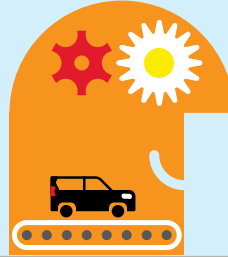
1555 mm

COMPLETE PEACE OF MIND WITH TOYOTA.



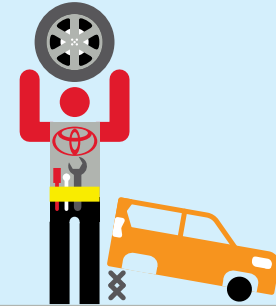
Toyota Quality Service

Your Toyota dealership will advise you on your vehicle's service requirements. It will need a health and safety check at least once a year. An intermediate check is necessary every year or 5,000 km.



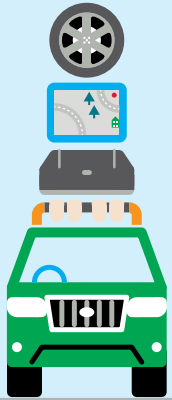
Toyota Low Maintenance Costs

All Toyota vehicles are designed and engineered to minimize your maintenance costs. This includes fewer parts that require servicing and, equally important, is that Toyota vehicle technology is made easily accessible so that maintenance labor time is less and pricing is competitive.



Toyota Genuine Parts

Providing the reassurance of Toyota quality, only genuine and approved components are used on your vehicle. If the vehicle is damaged, its design helps minimize the cost of repair because the most expensive-to-replace parts are deliberately located away from common damage zones. The result is ultimately less expense for parts and labor.



Toyota Accessories

Toyota genuine accessories are designed and manufactured with the same care, quality and attention to detail as Toyota vehicles. Adding a touch of style, comfort, convenience and practicality, they are tested for exceptional durability to enhance the enjoyment of your new vehicle. All accessories are covered by a 1-year warranty.



Toyota Comprehensive Warranty

Every new Toyota comes with a 3 years or 100,000 km vehicle warranty, which covers any defect caused by a manufacturing fault. Transport to the nearest authorized Toyota repairer will also be covered*. In addition, a 3 years or 100,000 km paint warranty protects against defects and surface rust caused

by a manufacturing fault (except load bin's which are covered for 1 year). Every Toyota commercial vehicle is covered by a 3 years with unlimited mileage corrosion-perforation warranty* against corrosion of body panels caused by a manufacturing fault in materials or workmanship.



Toyota Added Security

Toyota's comprehensive security system withstands the insurance industry's rigorous five-minute attack test. The alarm system and engine immobilizer are approved by major insurance companies.

*Check with your dealership for specific warranty details.



TOYOTA

AFRICA
DRIVES
TOYOTA

**FOR MORE INFORMATIONS ABOUT FORTUNER,
TEST DRIVES AND QUOTATIONS, PLEASE
CONTACT YOU NEAREST TOYOTA DEALERSHIP.**

To the best of our knowledge, all information in this brochure is correct at time of going to print. Details of specifications and equipment provided in this brochure are subject to local conditions and requirements and may, therefore, vary from models available in your area. Please inquire with your local dealership for details on your local specifications and equipment. • Vehicle body colors may differ slightly from the printed photographs in this brochure. • The readability of QR Codes® present in this brochure may differ according to the scanner used. Toyota cannot be held responsible should your device not be able to read any QR Codes® or interactive content markers. • Toyota Tsusho Africa (Pty) Ltd reserves the right to alter any details of specifications and equipment without prior notice. • © 2018 by Toyota Tsusho Africa (Pty) Ltd. ('TTAF'). • No part of this publication may in any way be reproduced without the prior written approval of Toyota Tsusho Africa (Pty) Ltd.

