

 **TOYOTA**

**URBAN CRUISER**



**3 YEARS**  
**TOYOTA**  
**WARRANTY**  
or 100,000 km

**A New Generation of Class-Leading Compact SUV**



# Refreshing

Introducing the youngest SUV in the Toyota family: The ALL new Urban Cruiser is revolutionizing the SUV market by reimagining the compact urban SUV. The Urban Cruiser is yet another class-leading product that delivers on Toyota's promise of quality, durability and reliability. Brimming with space and technology, it is a premium vehicle at the best value.





# Energetic Confident & Powerful

The Urban Cruiser has a bold new exterior design with an adventurous body and athletic stance - ready for all your journeys.

With a class-leading turning radius of 5,2m, the Urban Cruiser gives you ease of maneuverability even in congested spaces.

This compact SUV gives you the freedom to move.



Turn signals within the side mirrors improve security and deliver striking design.



The LED projector headlamps provide increased brightness and therefore, superior visibility.



The dynamic and sophisticated grill emphasizes the confident and energetic Urban SUV stance.



# Luxurious Cabin Comfort

Enjoy the luxurious upholstery and clean lines of the dashboard giving you a classy interior look. Adding a touch of sophistication is the user friendly instrument panel and leather steering wheel.

With the adjustable steering and the 890mm front legroom, find the perfect driving position for your journey.



## Armrest

Armrest. Supporting the arm comfortably while driving and offering additional storage.

## Steering wheel control

Steering wheel controls allow the driver access to audio and connectivity functions while staying focused on the road ahead.

## Advanced dashboard

The multi-function driver's display is clear and focused on the information that matters most.





# Space & Comfort

Enjoy a compact SUV with very generous leg and head room. With a luggage space of 328L, you are guaranteed to have ample room to pack for all your trips. With the 60/40 rear seat split you have easy accessible and expandable boot space.



## 328L

luggage space (rear seats up)

## 40/60

rear seat split increasing luggage space. Seats fold down in seconds with minimal effort.





# Advance Safety

Because safety is a priority, the New Urban Cruiser comes standard with next level safety features.

## TECT body

Total Effective Control Technology (TECT). The body design centers on the TECT concept, resulting in a structure that efficiently absorbs and disperses the energy in the event of a collision.

## ABS

Anti-lock Braking System (ABS), helping the driver to maintain steering control when braking on slippery roads.



## SRS Airbags

The Urban Cruiser comes standard with Driver and Passenger airbags keeping you safer on your journeys.

## EBD

Electronic Brake Force Distribution (EBD) is a further advancement of ABS that optimizes the braking force at each wheel to help the driver maintain control and stop in the shortest possible distance and time.



# 1.5L Petrol 4-Speed Automatic

	Power	Torque
<b>1462cm</b>	103/77	138
	HP/kW	Nm

The in-line 4 cylinder, 1.5L engine offers a smooth and exhilarating drive designed to deliver maximum driver engagement.





# Best Technology

## Be connected

A compact SUV full of all the technology you expect from an SUV. Use your mobile's capabilities while concentrating on the road and stay safe with voice commands. Easy to connect giving you full control of multimedia features including audio, hands-free phone, reverse camera and smartphone integrations. Enjoy your Toyota experience keeping complete control at your fingertips.



EFFORTLESS

### The Multi Information Display

Displaying useful on the go information to the driver such as fuel consumption, fuel consumption history and driver specific alerts.

## Effortless Communication

Enjoy the advanced 7" touch-screen infotainment system with Android Auto or Apple Car Play. Giving you access to navigation and all of the best music straight from your phone.



### Rear View Camera.

Enjoy parking with ease with the rear view camera displaying on the 7" touchscreen giving you a clear view.

### Speakers.

Listen to your favourite music thanks to the 4 speakers and 2 tweeters. Providing you with a surround sound experience



# Exciting Features

All the best and exciting features to give you the comfort and sophistication you need and want from your SUV, without the large price tag. From push start and electric windows to cruise control and navigation, the Urban Cruiser will surpass your expectations.



Voice control. Controlling your mobile phone with buttons available at your finger tips. Keeping you connected and safe.

Electrochromic IRVM. Makes driving during the night easy by automatically adjusting the inside mirror angle to avoid glare.



The Automatic air-conditioning system maintains the humidity and cabin-temperature at an optimum level to ensure maximum comfort.

Airbags. The Urban Cruiser comes standard with dual front-seat airbags keeping you safe.



USB & AUX connectivity. Connect your mobile phone to enjoy your media or easily charge your devices while on the go.



Electric windows. Open your windows with a single touch.

Start and Stop. A premium feature for starting the car with the push of a button.



Navigation. Connect your mobile to the infotainment system and access google maps to find your way while exploring.

Rain-sensing Wipers. Automatic wipers that sense rain water on the windshield and start to enhance your safety.



Cruise control. Maintain your speed with steering controls to keep your eyes safely on the road.





# Urban Cruiser

GRADE	SFX	Body type	Engine	ccm	Power (HP/kW)	Torque (Nm)	Transmission
DELUX automatic	R5	SUV	1.5L	1462	103/77	138	4 A/T

## DELUX - STANDARD

### Interior:

Automatic air conditioner - single zone  
 Heater  
 7" (17.7cm) touchscreen infotainment system  
 Apple CarPlay and Android Auto compatible (AppRadio Mode)  
 Bluetooth/hands-free connectivity  
 Auxiliary input USB  
 Center console with cupholder  
 Center lower box  
 Steering wheel controls, bluetooth and audio  
 Information display (Segment Type)  
 Wireless power door lock  
 Power socket 12V (Center Console)  
 Adjustable Steering column tilt  
 Power windows (all)  
 Hi-fabric Seats (Black)  
 Cup holders, front & rear  
 Room Lamp (roof center)  
 Rear seat flip and fold  
 5 seats  
 Electromagnetic tailgate open system  
 4 Speakers  
 Passenger sun visor with mirror & lamp  
 Driver & passenger sun visor with ticket holder  
 Driver seat height adjustment  
 Seats back pockets  
 Separately folding rear seat backs and cushions (60/40)  
 Coat hooks x 2  
 Upper Glove Box (Sun glass storage)  
 Rear center armrest with cupholder  
 Glove box light  
 Front footwell light  
 Trunk/Luggage room lamp  
 Leather Steering Wheel  
 Cooled Storage  
 Power socket 12V (Luggage Room)  
 Steering wheel controls, cruise control  
 Front center armrest  
 Cooled Storage  
 Power socket 12V (Luggage Room)  
 Steering wheel controls, cruise control  
 Front center armrest  
 Spot map lamp (Roof front)  
 Tweeter (Front)

### Exterior:

Front grill in chrome & granite grey  
 Body colour front and rear bumpers  
 Body colour outside mirrors  
 Outside mirrors electrically adjustable (Manual fold)  
 Rear parking sensors  
 Rear spoiler  
 LED Daytime Running Lights  
 Outside mirrors electrically adjustable & retractable  
 Chrome inside door handles  
 Roof rails  
 Rear window wiper and washer  
 LED Front Fog Lamps  
 Auto folding outside mirrors  
 Rain sensor, automatic wipers control

### Safety:

ABS - Anti-lock Braking System  
 EBD - Electronic Brake Force Distribution  
 Driver & passenger airbags (SRS)  
 Electric Power Steering  
 3 Point Rear Seatbelt, 2 point middle seatbelt  
 Front pre-tensioner, force limiter and adjustable  
 Child lock (rear doors)  
 ISOFIX points for child safety seat, rear seat  
 Anti-Theft system - Alarm and Immobilizer  
 Reverse Parking Camera

### Technical:

Automatic headlamps  
 Headlamp leveling (Manual)  
 Cruise Control  
 Day / Night rear view mirror (Auto)  
 Tyre dimensions 215/65 R16  
 Black alloy wheels  
 LED type main headlamps (silver design)  
 LED type rear lights, combination  
 LED high mounted brake light  
 Smart entry & Start system ("keyless" entry & start)  
 Electric power steering  
 D & P Seatbelt warning (buzzer front, lamp rear)  
 2 Rear headrests  
 Front ventilated disc brakes  
 Rear drum brakes  
 Fuel tank capacity: 48L  
 Overall width: 1,790 mm  
 Overall length: 3,995 mm  
 Overall height: 1,640 mm  
 Min. ground clearance: 198 mm  
 Min. turning radius (tyre): 5.2 m  
 Day / Night rear view mirror (Manual)

# Creating Individuality

Two tone colors available on the Deluxe Grade



MIDNIGHT BLACK ROOF & PRME TORQUE BLUE BODY

MIDNIGHT BLACK ROOF & CAFFEINE BROWN BODY

ARCTIC WHITE ROOF & PRME AUTUMN ORANGE BODY



A turning radius of 5.2 m offers ease of taking turns even in congested places.

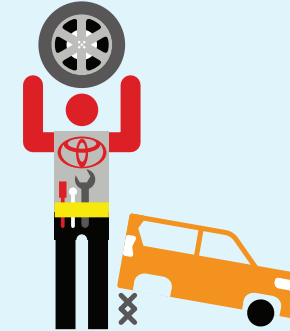
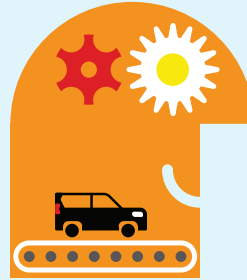
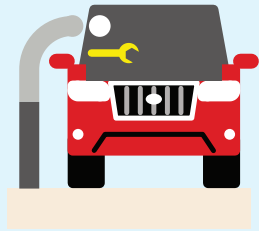


## CVT transmission

Enhances the driving convenience with clutchless driving, especially for driving in city traffic.



# COMPLETE PEACE OF MIND WITH TOYOTA.



## **Toyota Quality Service**

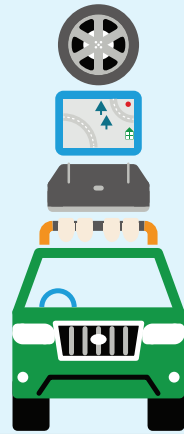
Your Toyota dealership will advise you on your vehicle's service requirements. It will need a health and safety check at least once a year. An intermediate check is necessary every year or 5,000 km.

## **Toyota Low Maintenance Costs**

All Toyota vehicles are designed and engineered to minimize your maintenance costs. This includes fewer parts that require servicing and, equally important, is that Toyota vehicle technology is made easily accessible so that maintenance labor time is less and pricing is competitive.

## **Toyota Genuine Parts**

Providing the reassurance of Toyota quality, only genuine and approved components are used on your vehicle. If the vehicle is damaged, its design helps minimize the cost of repair because the most expensive-to-replace parts are deliberately located away from common damage zones. The result is ultimately less expense for parts and labor.



### **Toyota Accessories**

Toyota genuine accessories are designed and manufactured with the same care, quality and attention to detail as Toyota vehicles. Adding a touch of style, comfort, convenience and practicality, they are tested for exceptional durability to enhance the enjoyment of your new vehicle. All accessories are covered by a 1-year warranty.



### **Toyota Comprehensive Warranty**

Every new Toyota comes with a 3 years or 100,000 km vehicle warranty, which covers any defect caused by a manufacturing fault. Transport to the nearest authorized Toyota repairer will also be covered\*. In addition, a 3 years or 100,000 km paint warranty protects against defects and surface rust caused

by a manufacturing fault (except load bin's which are covered for 1 year). Every Toyota commercial vehicle is covered by a 3 years with unlimited mileage corrosion/perforation warranty\* against corrosion of body panels caused by a manufacturing fault in materials or workmanship.



### **Toyota Added Security**

Toyota's comprehensive security system withstands the insurance industry's rigorous five-minute attack test. The alarm system and engine immobilizer are approved by major insurance companies.

\*Check with your dealership for specific warranty details.

**FOR MORE INFORMATION ABOUT THE  
URBAN CRUISER, TEST DRIVE AND  
QUOTATIONS, PLEASE CONTACT  
TOYOTA TANZANIA LTD.**



**FOR SALES**

Call: +255 800 750 134/ Email: sales@toyota.co.tz

**FOR VALUE PLUS**

Call: +255 786 value+ / Email: valueplus@toyota.co.tz

**FOR CUSTOMER SERVICE**

Call: +255 752 357 835 / Email: customerservice@toyota.co.tz

**FOLLOW US ON**

