



TOYOTA TANZANIA LTD

# *COROLLA* **CROSS**



**3** YEARS  
TOYOTA  
WARRANTY  
or 100,000 km

Class Leading | New Generation | Unmatched fuel efficiency



# Ascend to new heights

You're ready for a fresh start. Going more places. Seeing more people. This car suits your life today. That next level of fulfillment you've been seeking. You know the Corolla brand. Through its evolution, it has been loved by people around the world. Now it reaches a new stage. It is the COROLLA CROSS. This is the one you dreamed about. The one you worked for. Now, it's well within your reach.







# Grow bolder, every time you drive

Feel proud. You've earned it. This is a design that says you have arrived.  
Step in and glow with the new power of ownership.





# A space that brings everyone closer together

When there's enough space for all passengers to ride in comfort, conversation flows freely, and the ride is relaxed. There's a feeling of freedom that comes with sharing the journey together.



## Ample Cabin Space and Luggage Room

A spacious and comfortable cabin includes plenty of room to stretch for all on board, making long trips a breeze. In addition, the luggage compartment has class-leading capacity and offers ample space for all your cargo. Best of all, it is amazingly easy to access, load and unload.



## Air Conditioning

To ensure comfort for all, an air-conditioning duct at the rear end of the console box sends comforting ventilation to the backseat passengers.

## Technology For Every Journey

The 4.2" Multi-Information Display in the instrument panel incorporates 3D messages to help you drive more efficiently. It also holds the trip computer that displays essential journey data. All these functions can be easily accessed via the handy steering wheel controls







# Potential to expand your horizons

Activate your ambition. There's no time like today. A flat stable ride gives you the confidence to seek out new destinations and visit places you've never been.



## 2ZR-FE Engine

High fuel efficiency and sporty driving is delivered by the 1.8-liter engine with Dual VVT. The new Toyota Corolla Cross's engine provides good power with low level of cabin noise. Additionally, when starting up, this engine achieves linear acceleration



## TNGA Platform

The high-rigidity TNGA body and newly developed suspension deliver smooth ride comfort that is suitable for usage scenes of family customers



## Continuously Variable Transmission (CVT)

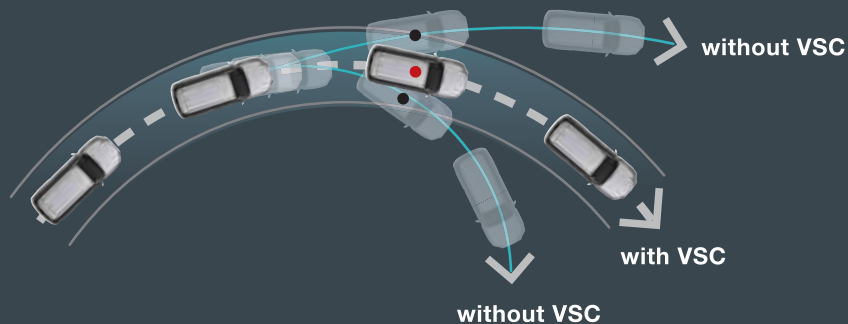
Experience the full driving potential of the Corolla Cross with ultra-smooth Direct Shift CVT. The transmission provides smooth and direct acceleration, as well as supreme quietness and top-class fuel economy performance





# Feel safe and let the good times roll

An array of advanced safety features provides peace of mind for both long trips and short ones. Worry-free driving sets everyone's mind at ease and ensures a pleasant experience.



## Vehicle Stability Control (VSC)

VSC automatically activates each individual brake as needed and controls engine output to help maintain stability and prevent skidding when turning sharply or cornering on slippery road surfaces.



## Airbags (SRS)

Corolla Cross is fitted with up to seven airbags. They include driver's knee airbag, SRS airbags for both driver and front passenger, side airbags for the front seats, and SRS curtain shield airbags covering both the front and rear seat passenger.

With Brake Assist



Without Brake Assist



## Brake Assist

The brake assist is a system that compensates for the lack of braking force during emergency braking maneuvers and increases the brake force. The brake assist system detects how quickly the brake pedal is depressed and increases the braking force during emergency braking. This generates a large amount of braking force even if the brake pedal is only stepped on lightly.



## Hill-Start Assist Control (HAC)

This control judges when the vehicle is on a slope and automatically performs brake control to suppress rollback of the vehicle when starting off, reducing the burden on the driver. This control is particularly effective when starting off is difficult, such as on slopes where the vehicle may rollback while the driver switches from the brake pedal to the accelerator pedal



## Traction Control (TRC)

The sophisticated Toyota system is an all-speed design that utilizes both brake and engine throttle control. TRC helps to avoid slippage of the driving wheels by slightly applying the brake on a slipping drive wheel and reducing the throttle to maintain traction according to the road surface conditions. The system eliminates the need for a subtle accelerator pedal operation and helps ensure vehicle control when starting or accelerating on slippery roads.

## Electronic Brake Force Distribution (EBD)



Even when there is a difference in front/rear or left/right Wheel load, EBD controls brake force on each wheel appropriately and helps to shorten stopping distance. The EBD controls the braking force on the wheels, based on the total number of the occupants, load conditions and during deceleration and cornering, thus offering excellent brake control.







# COROLLA CROSS

GRADE	SFX	Body type	Engine	ccm	Power (HP/kW)	Torque (Nm)	Transmission	
EXECUTIVE 	03 	SUV	1.8 Dual VVT-i	1798	140/103	172	CVT	

## EXECUTIVE GRADE

### Interior:

Manual heater & aircon  
Multimedia touch screen 6.8"  
6 speakers  
USB input (Front)  
1x12V Socket  
Power Steering  
Power windows one touch (all)  
Power Door Lock  
Steering switches -Telephone +Audio  
Rear Window Defogger  
Front and Rear Console box  
Rear Arm Rest (w/cupholder)  
Fabric seats  
Front Personal Lamp  
Glove Box  
Cupholders: (Front x2 Rearx4)  
Upholstered Door Trim  
PVC Door Armrest  
Inside Door Handle Satin Paint  
Luggage Compartment Lamp  
Seatbelt warning buzzer (D&P)  
Sun Visor With Mirror  
Folding rear seats 40/60  
Reverse camera (back monitor)  
Manual driver and passenger seat adjust

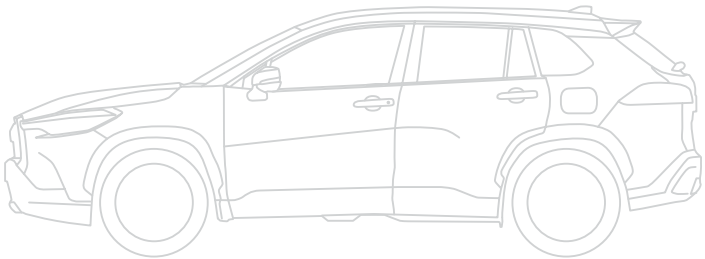
### Exterior:

Shark Fin Antenna  
Front Grill Mat Black  
Daytime Running Lights  
High Mount Stop Lamp (LED)  
Colour outside mirrors electrically adjustable  
Turn signals on side mirrors



### Safety:

ABS - Anti-lock Braking System  
VSC - Vehicle Stability Control  
TRC - Traction Control  
HAC - Hill Starting Assist System  
EBD - Electronic Brakeforce Distribution  
Driver & passenger airbags (SRS)  
Triangle Caution Plate  
Child lock  
ISOFIX points for child safety on rear outer seats  
Immobilizer  
Jack handle, hub nut wrench, spanner, pliers, case  
Fire extinguisher

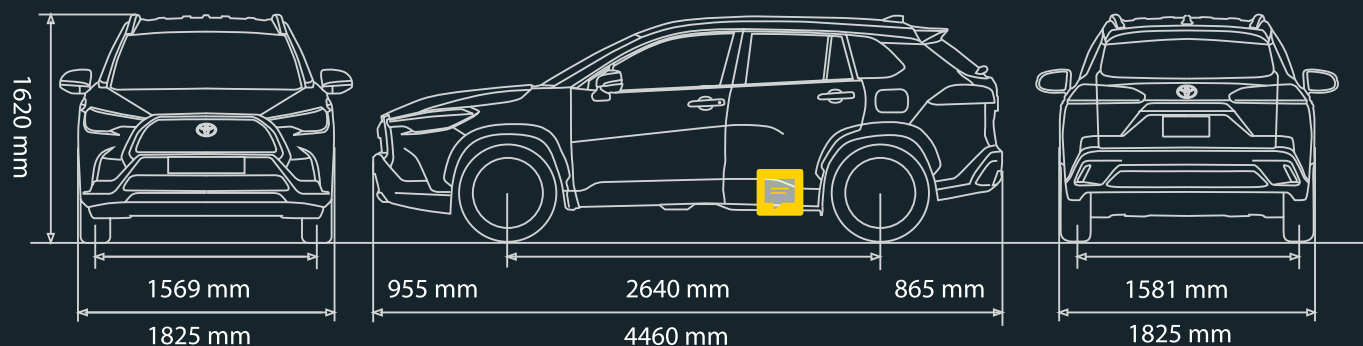


### Technical:

Fuel tank capacity 47L  
Tilt and telescopic steering column  
407L Boot Space  
Intermittent wipers control  
Steel Wheels  
Tire dimensions: 215/60 R17  
Full size spare tire  
Halogen headlamps  
Manual headlamp levelling system  
Overall width: 1.825 mm  
Overall length. 4.460 mm  
Overall height: 1.620 mm  
Min. ground clearance: 161 mm  
Min. turning radius (tire): 5.2 m







#### LIMITED on top of ACTIVE

##### Interior:

Auto heater & aircon – single mode  
USB input (Console)  
Push start system  
Smart entry & Start system ("keyless" entry & start)  
Tonneau Cover

##### Exterior:

Front fog and driving lamp

##### Safety:

Rear parking assistance

##### Technical:

Allow Wheels

#### EXECUTIVE on top of LIMITED

##### Interior:

Multi information 4,2" color display  
Synthetic leather seats  
Leather steering wheel  
Steering Switches – Cruise control & Voice  
Leather shift lever and knob  
Door Pocket ( Passenger )

##### Exterior:

Chrome details on front grille  
Chrome window belt lines  
Rear lamps in LED combination

##### Safety:

Side airbags (SRS)  
Curtain airbags (SRS)  
Driver knee airbag (SRS)

##### Technical:

LED type main headlamps  
Cruise Control



1K3: CELESTITE GRAY ME.

D4D: SUPER WHITE 2.

3R3: RED M.M.

1F7: SILVER ME

070: WHITE PEARL MC

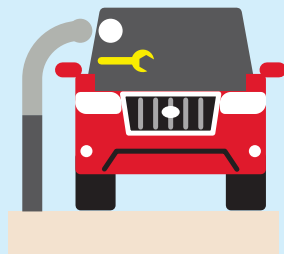
209: BLACK MC.

1G3: GRAY ME.



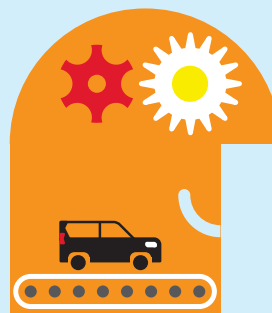


# COMPLETE PEACE OF MIND WITH TOYOTA.



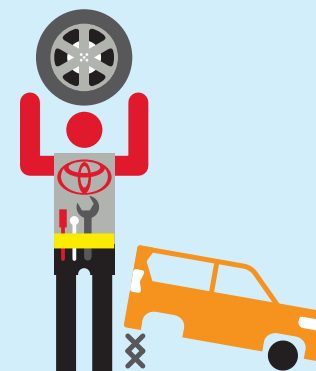
## **Toyota Quality Service**

Your Toyota dealership will advise you on your vehicle's service requirements. It will need a health and safety check at least once a year. An intermediate check is necessary every year or 5,000 km.



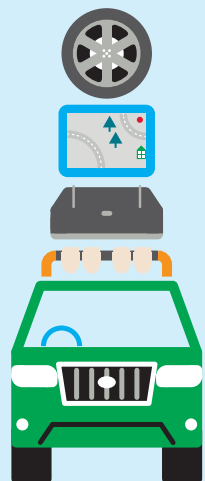
## **Toyota Low Maintenance Costs**

All Toyota vehicles are designed and engineered to minimize your maintenance costs. This includes fewer parts that require servicing and, equally important, is that Toyota vehicle technology is made easily accessible so that maintenance labor time is less and pricing is competitive.



## **Toyota Genuine Parts**

Providing the reassurance of Toyota quality, only genuine and approved components are used on your vehicle. If the vehicle is damaged, its design helps minimize the cost of repair because the most expensive-to-replace parts are deliberately located away from common damage zones. The result is ultimately less expense for parts and labor.



### **Toyota Accessories**

Toyota genuine accessories are designed and manufactured with the same care, quality and attention to detail as Toyota vehicles. Adding a touch of style, comfort, convenience and practicality, they are tested for exceptional durability to enhance the enjoyment of your new vehicle. All accessories are covered by a 1-year warranty.



### **Toyota Comprehensive Warranty**

Every new Toyota comes with a 3 years or 100,000 KM vehicle warranty, whichever comes first. This covers any defect caused by a manufacturing fault. In addition, a 3 years or 100,000 KM paint warranty protects against defects and surface rust caused by a manufacturing fault (except for deck panels of pick up trucks which are covered for 1 year or 20,000 KM, whichever comes first).



### **Toyota Added Security**

Toyota's comprehensive security system withstands the insurance industry's rigorous five-minute attack test. The alarm system and engine immobilizer are approved by major insurance companies.

\*Check with your dealership for specific warranty details.



**FOR MORE INFORMATION ABOUT THE  
STARLET, TEST DRIVE AND QUOTATIONS,  
PLEASE CONTACT TOYOTA TANZANIA LTD.**



**TOYOTA TANZANIA LTD**

**FOR SALES**

Call: +255 800 750 134/ Email: [sales@toyotatz.com](mailto:sales@toyotatz.com)

**FOR VALUE PLUS**

Call: +255 786 value+ / Email: [valueplus@toyotatz.com](mailto:valueplus@toyotatz.com)

**FOR CUSTOMER SERVICE**

Call: +255 789 869 682 / Email: [customerservice@toyotatz.com](mailto:customerservice@toyotatz.com)

**FOLLOW US ON**

 [@toyota.tanzania](https://www.facebook.com/toyota.tanzania)  
 [@toyota.tanzania](https://www.instagram.com/toyota.tanzania)  
 [@toyotaTanzania](https://twitter.com/toyotaTanzania)  
 [www.toyota.co.tz](http://www.toyota.co.tz)